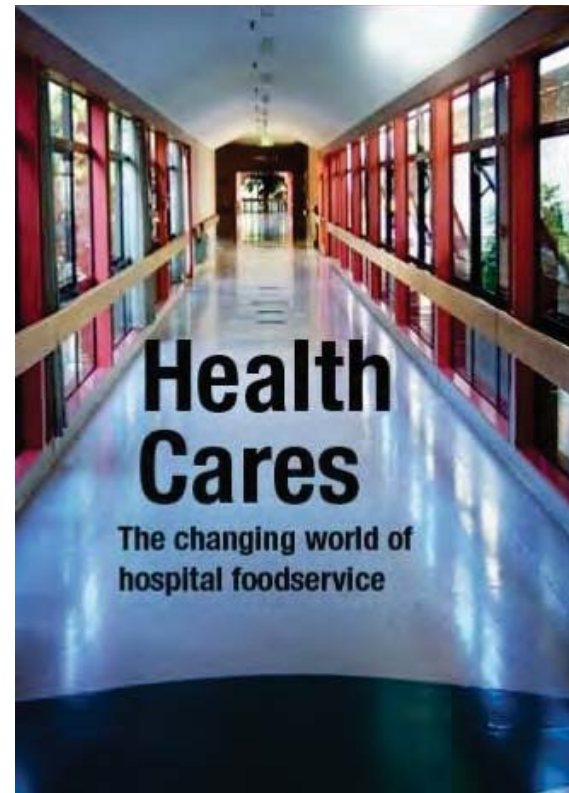
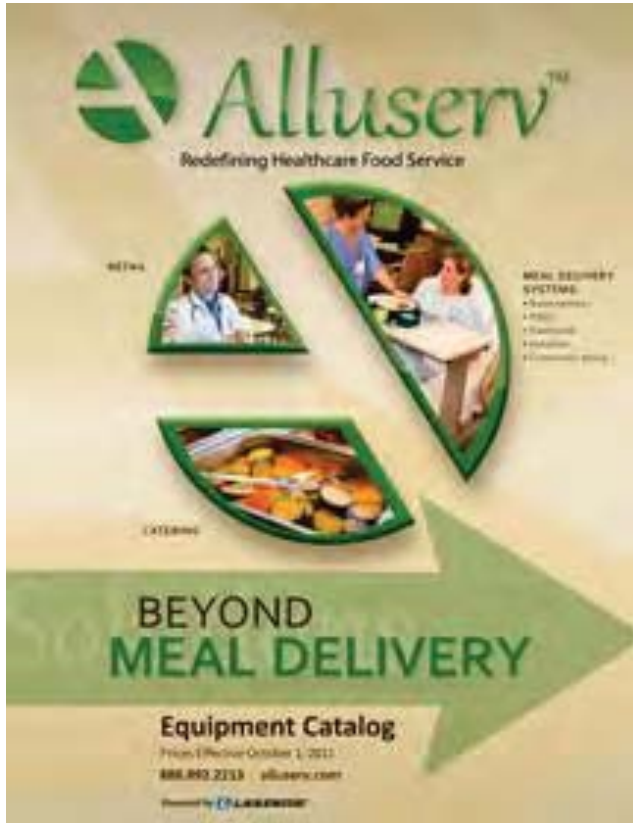
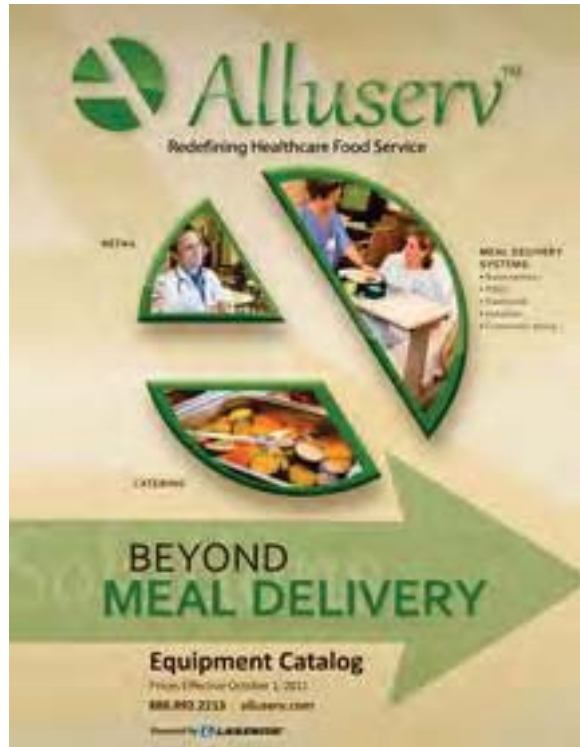


LET ALLUSERV HELP YOU GET THERE



Powered by **L LAKESIDE**®



- ▶ Follow Alluserv for healthcare information, equipment solutions & industry updates
- ▶ [twitter@alluserv](https://twitter.com/alluserv)
- ▶ [LinkedIn@alluserv](https://www.linkedin.com/company/alluserv)
- ▶ alluserv.com/blog

Webinar sponsored by Alluserv
www.alluserv.com

Facilitator:

Marsha Diamond, Alluserv New
Business Development



Powered by **L LAKESIDE**[®]

Roadmap of the Affordable Care Act



November, 2012
Thomas Doran, FSA, MAAA

Agenda

- ▶ Affordable Care Act
- ▶ Background
- ▶ Key Provisions
- ▶ Implementation Highlights
- ▶ Implications for various constituencies



Background and the Uninsured

- ▶ The Uninsured ...
 - ▶ Eligible for public programs Medicaid/SCHIP and not enrolled
 - ▶ Young adults
 - ▶ Non citizens – legal and illegal
 - ▶ Pre-existing Condition Exclusions
 - ▶ Annual or Lifetime Maximums
 - ▶ Affordability



Affordable Care Act – Focus



- ▶ Coverage expansion with Subsidies and Insurance Market Reform
- ▶ “Exchanges” Created and Benefit Design Requirement
- ▶ Delivery System Reform and Payment Redesign

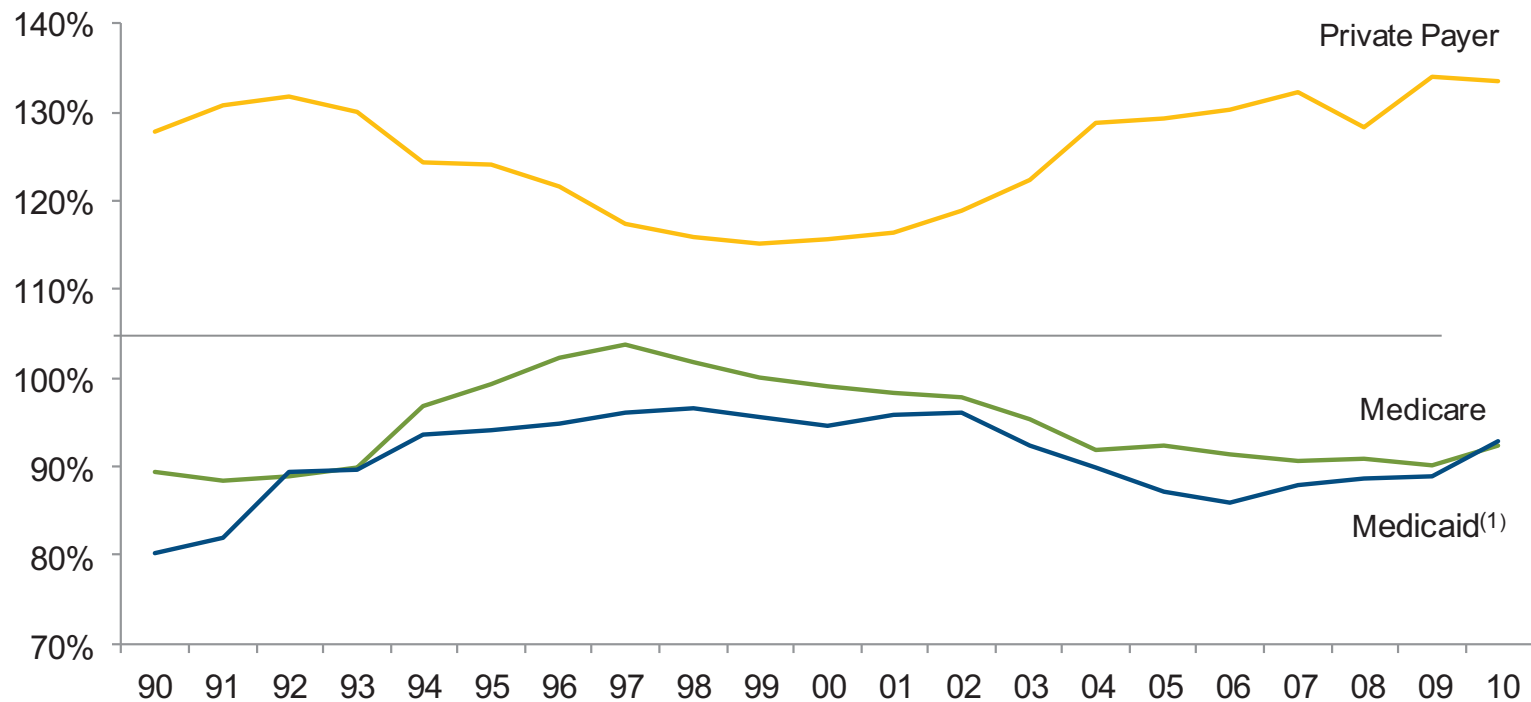
Post Reform



- ▶ Individual Market
 - Composition Dramatically changes
 - More than Doubles in size to ~25 M
 - (from previously unissued or employees that firms drop coverage)
- ▶ Employer Market
 - Slight Decline (~150 M)
 - Drop offset by mandate driven enrollment
- ▶ Medicaid
 - Grows by 30%+ (~50M)
 - Expansion to 133% of FPL

AHA Trend watch Chart4.6

Aggregate Hospital Payment-to-cost Ratios for Private Payers, Medicare, and Medicaid, 1990 - 2010



Source: Avalere Health analysis of American Hospital Association Annual Survey data, 2010, for community hospitals. ⁽¹⁾Includes Medicaid Disproportionate Share payments.

Highlights on Key provisions

✓ 2012

✓ Accountable Care Organizations

✓ Medicare Provider Payment Changes

- ✓ Productivity Adjustment in selected markets lower rates

✓ Reduced Medicare Payments for Hospital Readmissions

- ✓ Oct, 2012 – final CMS rule published

✓ Medicare Value Based Purchasing



Highlights on Key provisions

▶ 2013

- ✓ Medicare Bundled Payment Pilot Program
- ✓ Medicaid Payments for Primary Care
 - ✓ Increase to 100% of Medicare Rate
- ✓ Tax on Medical Devices (2.3%)
- ✓ Reduce Medicare and Medicaid Disproportionate Share Hospital Payments

